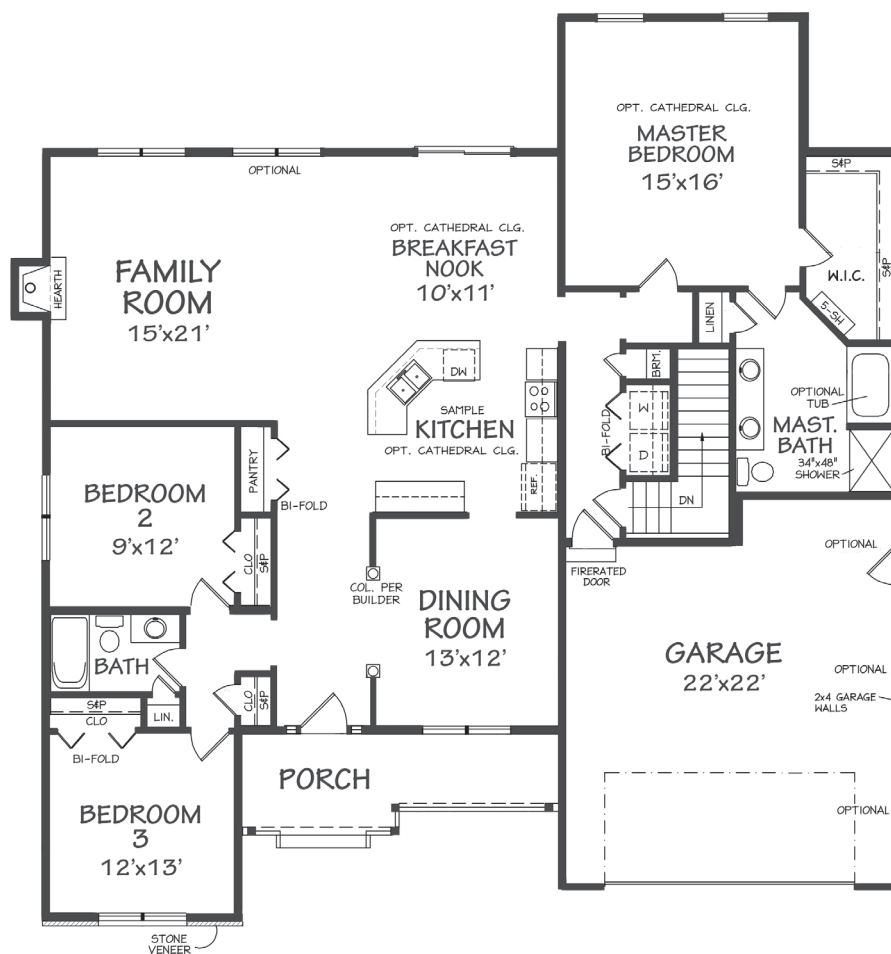


The Del Ray Ranch



With a traditional southern flair, this new design brings yet another innovative and refreshing look to the community. With a very attractive front farmer's porch adding to the curb-side appeal, the Del Ray captures your eye as you pass through the beautiful entry foyer opening into a columned half-wall dining room. You will immediately feel you are in a much larger home with the standard 9' ceilings. Customers love this design and it is destined to become a new standard for the community.



Built By:
IGSBUILD
 Greenscape Property & Building, LLC
 GSBUILD.com

Marketed Exclusively by:
RE/MAX
Innovative
 InnovativeSells.com

MM
MOVEMENTMORTGAGE
 movement.com/sean.casey

Londonderry, New Hampshire 03053 • (603) 425-2300