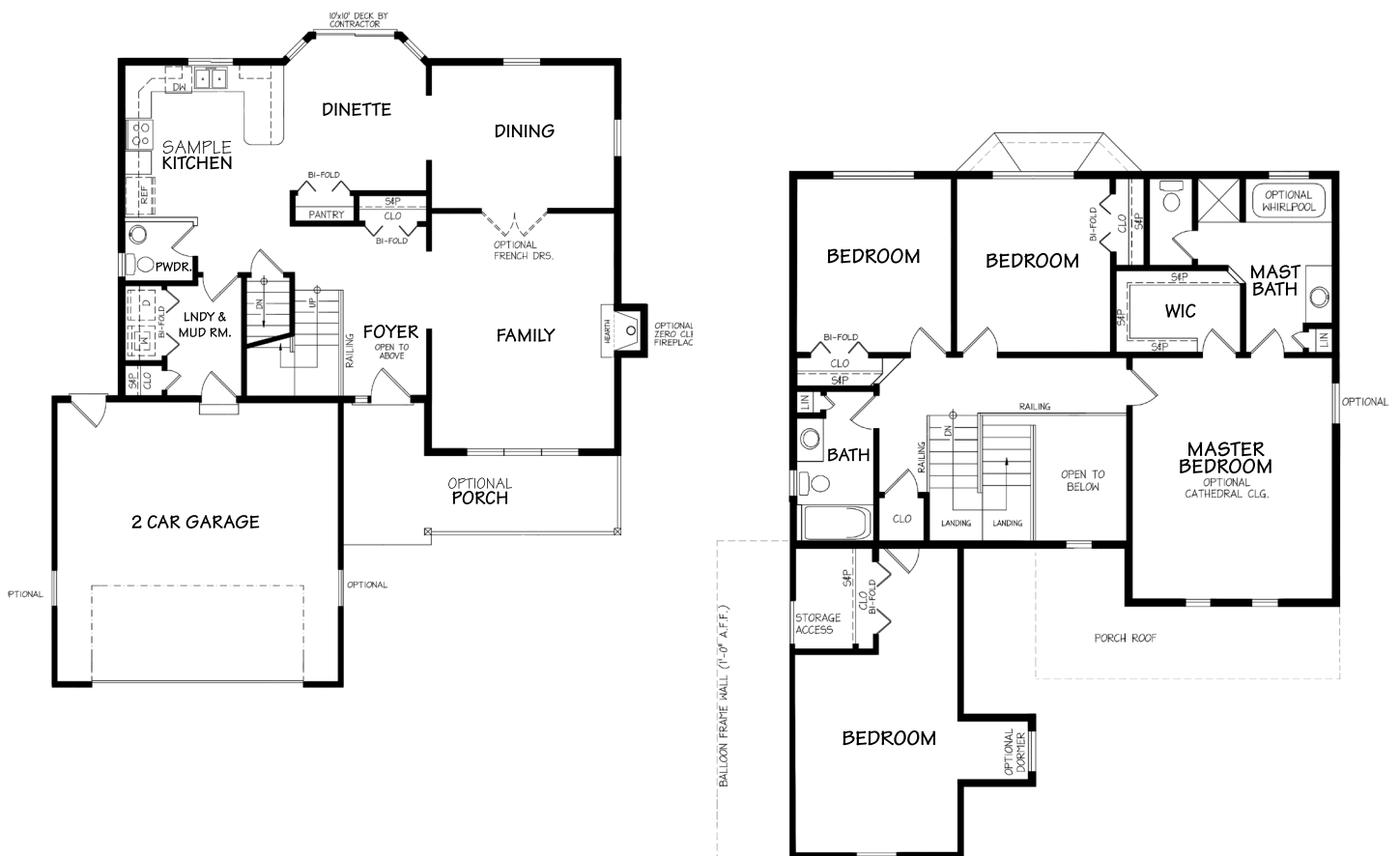


The Plymouth-II



This home has such standard features as an oversized family room, open foyer, turned staircase and first floor laundry room/ mud room. Don't forget to add the optional farmer's porch... it really adds a touch of country to this home's look.



Built By:
GSBUILD
 Greenscape Property & Building, LLC
 GSBuild.com

Marketed Exclusively By:
RE/MAX Innovative
 InnovativeSells.com

MM
MOVEMENTMORTGAGE
 movement.com/sean.casey

Londonderry, New Hampshire 03053 • (603) 425-2300