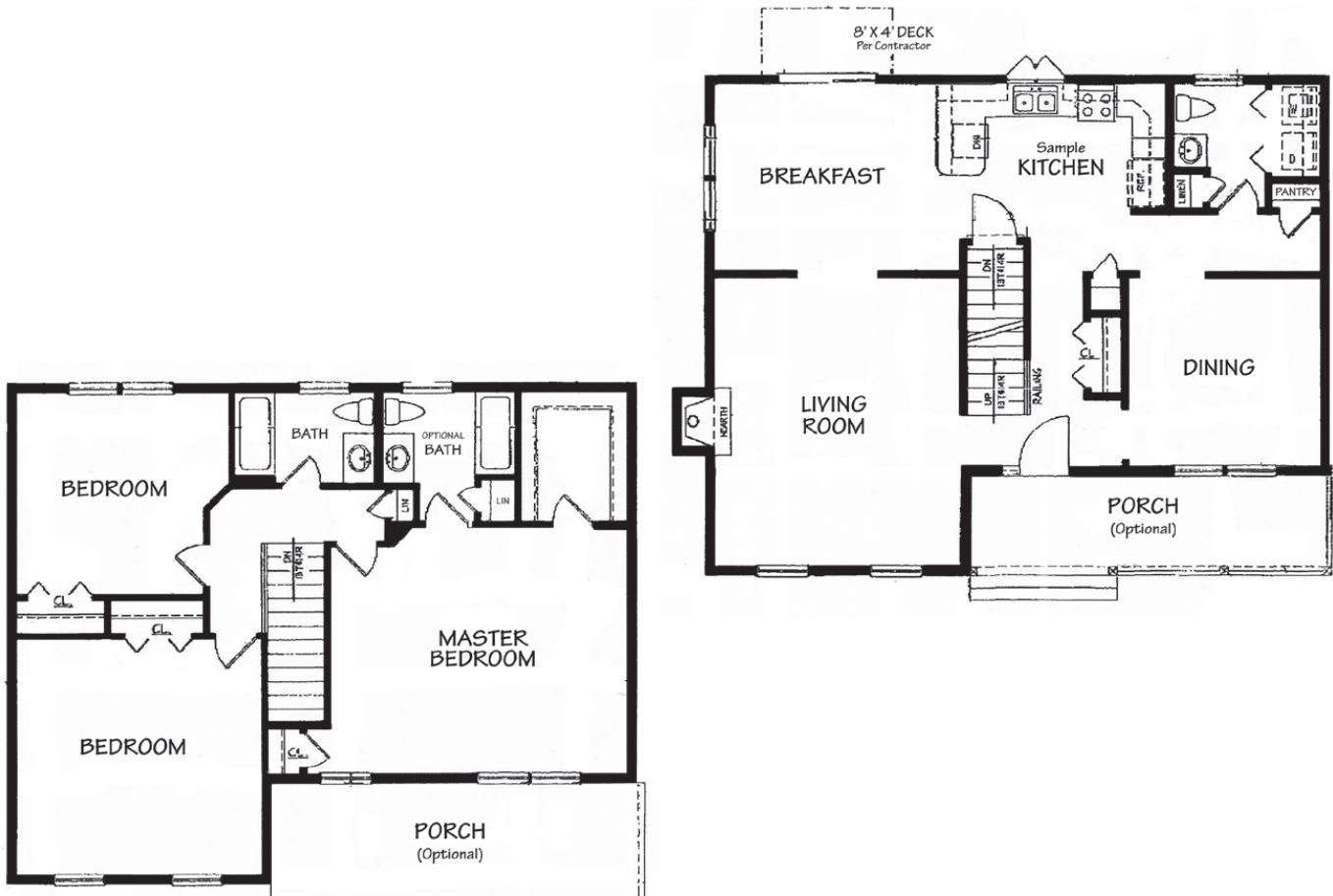


The Summerset-I Garage Under



A variation of the original New England Farmhouse, this home's charm is enhanced by the optional 6' farmer's porch. The Summerset can accommodate an optional attached garage, 4th bedroom or additional bath.



Built By:

 Greenscape Property & Building, LLC
 GSBuild.com

Marketed Exclusively By:

 InnovativeSells.com


MOVEMENTMORTGAGE
 movement.com/sean.casey

Londonderry, New Hampshire 03053 • (603) 425-2300